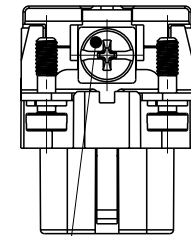
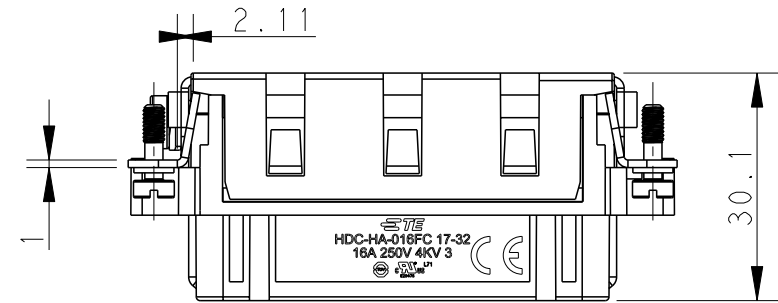
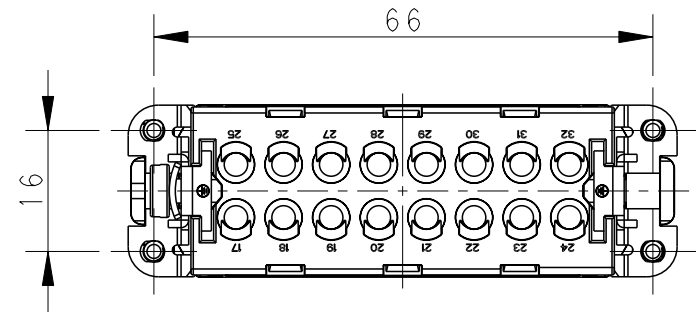
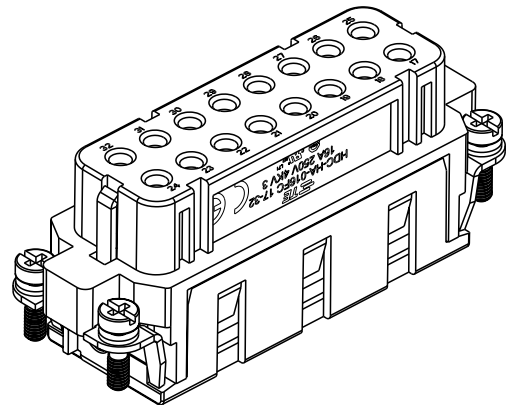


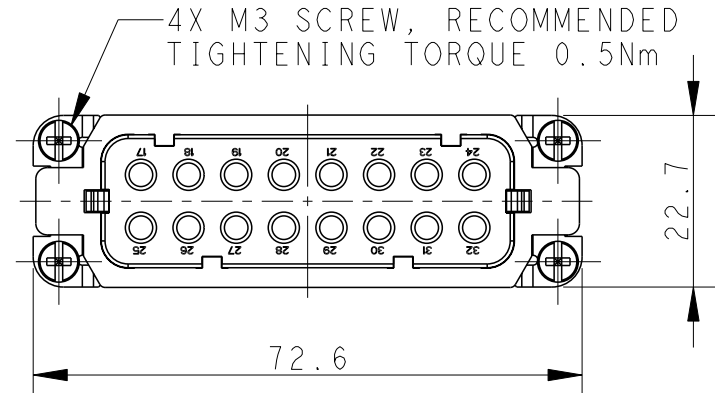
THIS DRAWING IS UNPUBLISHED. RELEASED FOR PUBLICATION 20  
 © COPYRIGHT 20 BY - ALL RIGHTS RESERVED.

REVISIONS					
P	LTR	DESCRIPTION	DATE	DWN	APVD
	A	INITIAL	25Jan2015	DW	CW
	B	ECR-20-016101	09JUN2021	BS	CW



M4 SCREW  
RECOMMENDED  
TIGHTENING TORQUE 1.2Nm

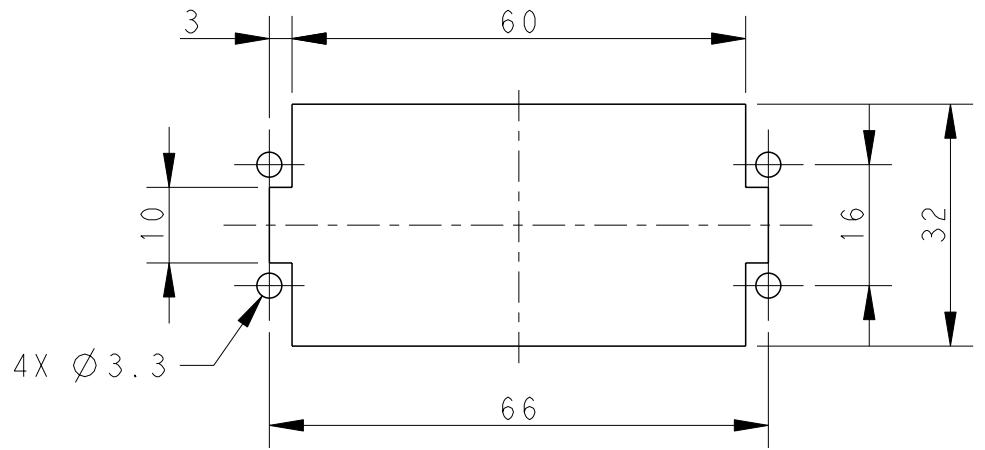
4X M3 SCREW, RECOMMENDED  
TIGHTENING TORQUE 0.5Nm



NOTES:  
 1. TECHNICAL CHARACTERISTICS:  
 INSULATION MATERIAL: PC  
 RATED VOLTAGE: 250 V  
 RATED CURRENT: 16 A  
 INSULATION RESISTANCE: >=400MΩ  
 RATED IMPULSE VOLTAGE: 4 KV  
 POLLUTION DEGREE: 3  
 FLAMMABILITY: UL94V-0  
 MATING CYCLES: 500 CYCLES  
 WIRE RANGE: 0.14-4 mm<sup>2</sup> (26-12 AWG)  
 CONTACT TYPE: CRIMP CONTACT  
 2. CONTACT NEED TO BE ORDERED SEPARATELY.  
 (ORDER No. REFER TO DRAWING: T20300X20XX000)

注释:  
 1. 技术参数:  
 绝缘材料: PC  
 额定电压: 250V  
 额定电流: 16A  
 绝缘电阻: >=400MΩ  
 额定脉冲电压: 4 KV  
 污染等级: 3  
 阻燃等级: UL94V-0  
 插拔次数: 500次  
 接线范围: 0.14-4 mm<sup>2</sup> (26-12 AWG)  
 接线类型: 冷压接  
 2. 端子需要单独订购.  
 (订货号参考图面: T20300X20XX000)

PANEL CUT FOR INSERTS FOR USE  
WITHOUT HOODS/ HOUSINGS



HA-016-FC 17-32	T2010324201-000
DESCRIPTION	PART NUMBER

THIS DRAWING IS A CONTROLLED DOCUMENT.		DWN	22Jan2015		TE Connectivity
		CHK	22Jan2015		
		APVD	22Jan2015		
		NAME	Xiang Xu		
DIMENSIONS: mm		TOLERANCES UNLESS OTHERWISE SPECIFIED:		NAME HA-016-FC 17-32	
0 PLC ±-		1 PLC ±-		PRODUCT SPEC 108-137045	
1 PLC ±-		2 PLC ±-		APPLICATION SPEC 114-137045	
2 PLC ±-		3 PLC ±-		SIZE A3	
3 PLC ±-		4 PLC ±-		CAGE CODE 00779	
4 PLC ±-		ANGLES ±-		DRAWING NO T2010324201000	
MATERIAL		FINISH		RESTRICTED TO	
-		-		-	
-		-		SCALE 1:1	
		Customer Drawing		SHEET 1 OF 1	
				REV B	

Printed on 18 Jun 2021 14:47 (China Standard Time) from TE236667